

Condo for sale 2 bedroom 67 m² in C View Residence Pattaya, Pattaya

Discover your dream condo at the prestigious C View Residence Pattaya! Located in the serene Pratumnak district of Pattaya, this beautiful flat offers comfort and elegance. It features a spacious area of 67 m² and is situated on the 6th floor of an 8-story building. This 2-bedroom condo is fully furnished, providing a ready-to-move-in experience with all the comforts of home in place. Each room is designed with a modern aesthetic and practical functionality, ensuring a cozy living space. Priced at ฿ 3,550,000, this flat is a valuable find, especially since it falls under the foreign quota, making it an attractive option for international buyers or investors. Whether you are looking for a new permanent residence, a holiday home, or an inves...

฿ 3,550,000

UNIT PARAMETERS:

UID	FS-240058
quota	foreign quota
type	2 bedroom
size	67m ²
floor	6
view	city view
transfer fee payer	50/50

PROJECT PARAMETERS:

district	Pratumnak
floors	8
built in	2015
maintenance	฿ 32,160/year

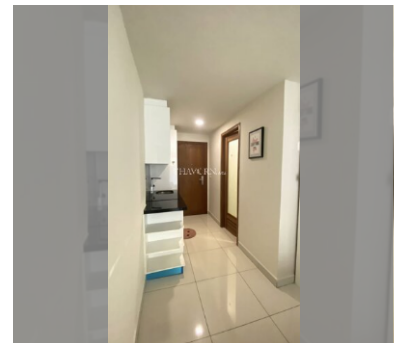
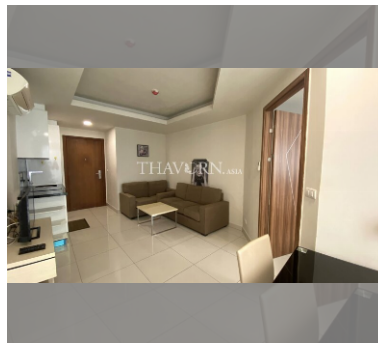
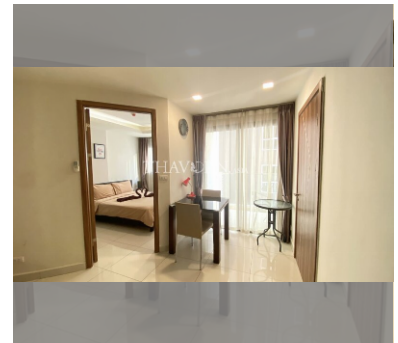
FACILITIES:

General information: boutique, meters to beach: 350, minutes to beach: 5, underground parking.

Swimming pool: rooftop pool.

Chill zone: garden.

Other: lobby, CCTV, security.

[details](#)